

PRODUCT SHOWCASE

GEOCONNECTION LOOKS AT THE LATEST IN GEOMATICS PRODUCTS

EOS POSITIONING SYSTEMS RELEASES EOS TOOLS PRO FOR WINDOWS

Eos Positioning Systems, a manufacturer of high-accuracy Arrow Series GNSS receivers for the GIS, engineering, construction, and surveying community, announced the release of Eos Tools Pro for Windows 10. Eos Tools Pro implements **powerful new features** that enables users to exploit all **four global GNSS constellations** and a state-of-the-art **NTRIP client** to access RTK bases and RTK networks all over the world via NTRIP, Direct IP, and wireless radios. Eos Tools Pro includes new features for both field professionals and application developers. www.eos-gnss.com

INTRODUCING THE MESA 3 SMART CARD READER

Juniper Systems Limited announced the Mesa 3 Smart Card Reader. This military-grade, **CAC/PIV-compatible smart card reader** integrates with the Mesa 3 Rugged Tablet to provide the ultimate, two-tier authentication solution for **data protection** in industries with **security requirements**. Developed for industries that require additional authentication, personal identities can be verified and access to sensitive information can be controlled easily. Applications for the Mesa 3 Smart Card Reader include the military, government agencies, law enforcement, public utilities/critical infrastructure, emergency services, and medical fields. The Mesa 3 Smart Card Reader is a powerful **Windows 10 device** that offers the security organisations need when users are accessing sensitive information. The rugged design makes it weather resistant, standing up to temperature changes, rain, and snow, and ensures that the device can be used in any environment. www.junipersys.com

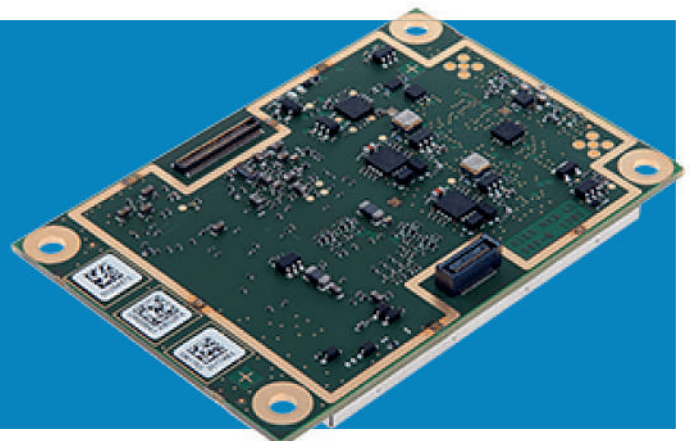


HEXAGON CONNECTS SLOPE STABILITY MONITORING WITH MINE OPERATIONS

Hexagon's Mining division and IDS GeoRadar, a Hexagon company, jointly announced the mining industry's first straightforward integration of systems for safety and radar-based slope stability hazards. The single platform is part of the newly released **HxGN MineProtect Collision Avoidance System (CAS) 4.6**. It means mines can now receive real-time equipment visualization with **timely alerts about hazardous areas** for people and machinery. Workers and equipment are protected from injury-threatening events by being forewarned of no-go-zones. No-go zones are identified in IDS GeoRadar's IBIS Guardian software, which creates **geofenced zones** and **hazard maps**, and is correlated with radar alarms. Guardian's integration with CAS 4.6 and complementary HxGN MineProtect solutions, Personal Alert and Tracking Radar, ensures that alarms are automatically triggered when a no-go zone is approached. www.hexagon.com

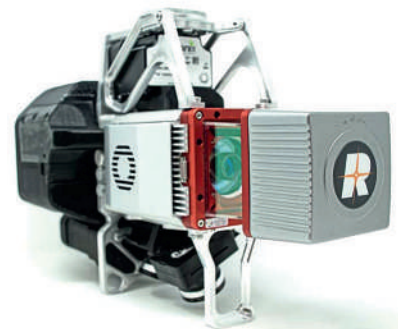
SEPTENTRIO UNVEILS ASTERX-M2 SX

Septentrio, a provider of high-precision GNSS positioning solutions, announced the launch of **AsterX-m2 Sx OEM board**. With this GNSS receiver Septentrio pioneers a novel approach to high-accuracy positioning. Septentrio's latest core GNSS technology is integrated with a sub-decimeter correction service enabling simple **plug-and-play positioning solutions**. High-accuracy positioning is available directly out of the box as GNSS corrections are automatically streamed to the receiver. This significantly simplifies the user's GNSS receiver set-up process and eliminates completely the hassle of corrections service subscription and maintenance. www.septentrio.com



GEOCUE GROUP RELEASES TRUE VIEW 615/620; RIEGL/APPLANIX-BASED UAS LIDAR SYSTEM

GeoCue Group announces the release of their new True View 615 and True View 620 UAS LIDAR/Imagery 3D imaging systems (3DIS). GeoCue's True View 615 & 620 are equipped with **RIEGL's miniVUX-2UAV laser scanner** integrated with dual photogrammetric cameras. Position and Orientation is provided by an **Applanix APX-15** (True View 615) or extreme accuracy **APX-20** (True View 620). All True View 3D Imaging Systems are bundled with Applanix POSPac, True View EVO post-processing software and True View Reckon data management solution. The True View 615/620 systems are compact, **survey grade 3D Imaging Sensors** designed for small Unmanned Aerial Systems. The RIEGL laser scanner and dual photogrammetric cameras have been carefully configured to provide a fused LIDAR/imagery field of view of up to 120°. www.geocue.com





Accelerate Economic Recovery

Complete Your Existing Jobs and Start New Projects

As things start to move again, now is the time to make an immediate impact.

Our solutions integrate easily and drive productivity across your entire workflow. You'll have all the tools needed to land new work, get back on track, and make up for lost time.

topconpositioning.com/recovery

 **TOPCON**