

## QUARTIX HELP WEST OXFORDSHIRE DC TO WIN ENERGY SAVINGS AWARD

**West Oxfordshire District Council**, which is using *Quartix* telematics technology to plan more efficient routes for its service vehicle fleet, has won a top Energy Savings Trust award. The council, winner of the best small public sector fleet prize, has reduced its CO2 emissions by 17 per cent and the Fleet Hero Awards 2011 judges said the council had used all available tools to make significant changes. Its results were particularly impressive for a small district council: managers had tackled key criteria in a good, consistent way and demonstrated very detailed record keeping. The council has also invested in two pool bikes to reduce grey fleet mileage for local journeys.  
[www.quartix.net](http://www.quartix.net)

## SPATIAL BOOKMARKING' APP PIN DROP LAUNCHED

**Pin Drop** is a new iPhone app and website that helps people mark locations that matter to them. Pin Drop enables users to drop pins representing their favourite places around the world, or take inspiration from the curated lists feature. Each pin can then be assigned to multiple categories allowing users to build up a rich, organised library of locations. There are no points, no badges and no leader boards: every pin is private unless users choose to share them with friends or colleagues. Pin Drop cofounder Andy Ashburner was inspired to develop the app after becoming frustrated with the limited functionality of the native iPhone map app.  
[www.pindropapp.com](http://www.pindropapp.com)

## CSA AND EGS ESTABLISH METOCEAN JOINT VENTURE COMPANY

**CSA International, Inc. (CSA)** and **EGS Survey Group (EGS)** are pleased to announce the formation of a new Joint Venture Company, **EGS Metocean Sound Sciences (MSS)**. The Joint Venture Company brings together the extensive experience of both CSA and EGS in conducting large, technical marine surveys, including oceanographic programs worldwide. MSS will provide metocean and acoustic monitoring services, including consultancy and the collection of high-quality data to assist in engineering, design, daily marine operations, planning, and management for offshore exploration, field development, ports and harbours, and cable and pipeline routes. MSS services will be provided through the existing worldwide offices of both CSA and EGS.  
[www.egsmss.com](http://www.egsmss.com)



## DIGITALGLOBE CAPTURES IMAGE OF CHINESE CARRIER

### DIGITALGLOBE'S ANALYSIS CENTER HAS CAPTURED THE FIRST SHOT OF CHINESE AIRCRAFT CARRIER VARYAG FROM SPACE ON ITS SECOND SEA TRIAL

The image above was collected on December 8th by the first satellite in **DigitalGlobe's** constellation – **QuickBird** – which just celebrated its 10th anniversary in October. What makes this particular discovery even more amazing is that it was captured amid

fairly heavy cloud cover. Thanks to the constellation of satellites, including *QuickBird*, *WorldView-1* and *WorldView-2*, DigitalGlobe is capable of collecting over 500 million km<sup>2</sup> of quality imagery per year.  
[www.digitalglobe.com](http://www.digitalglobe.com)

## NAVTEQ CHOSEN TO SUPPORT NEW Aponia NAVIGATION APP

**NAVTEQ** has been chosen by **Aponia Software s.r.o.** to support its new navigation software architecture with pan-European map data and a range of advanced content. Aponia, a Czech Republic based mobile software specialist, is currently focusing on navigation and location and has recently re-launched its *BE-ON-ROAD* application with a completely new architecture. It is designed for consumer and enterprise environments and can operate using both the US and GLONASS GPS systems. NAVTEQ is providing pan-European maps

plus advanced navigation features such as 3D City and Landmark models; Driver Alerts; and Speed Limits to enable realistic calculation of journey times. *BE-ON-ROAD* is available for mobile devices running on the Windows Phone, iOS and Android Operating Systems. *BE-ON-ROAD* can also be customised for use in professional fleet and mobile workforce management applications and is available with a set of API functions for easy integration into existing systems.  
[www.navteq.com](http://www.navteq.com)

## ARCGIS RUNTIME SDK FOR ANDROID NOW AVAILABLE

**Esri** have released the *ArcGIS Runtime Software Development Kit (SDK)* for the Android platform. Available at no cost from the Esri Resource Center, ArcGIS Runtime SDK for Android enables organizations to build and deploy powerful geospatial solutions. Esri designed the SDK to use web services available from ArcGIS for Server and ArcGIS Online. Users of the platform can access dynamic, tiled, and image map services; overlay graphics; search and identify features; locate addresses; collect and update data; and perform GIS analysis.

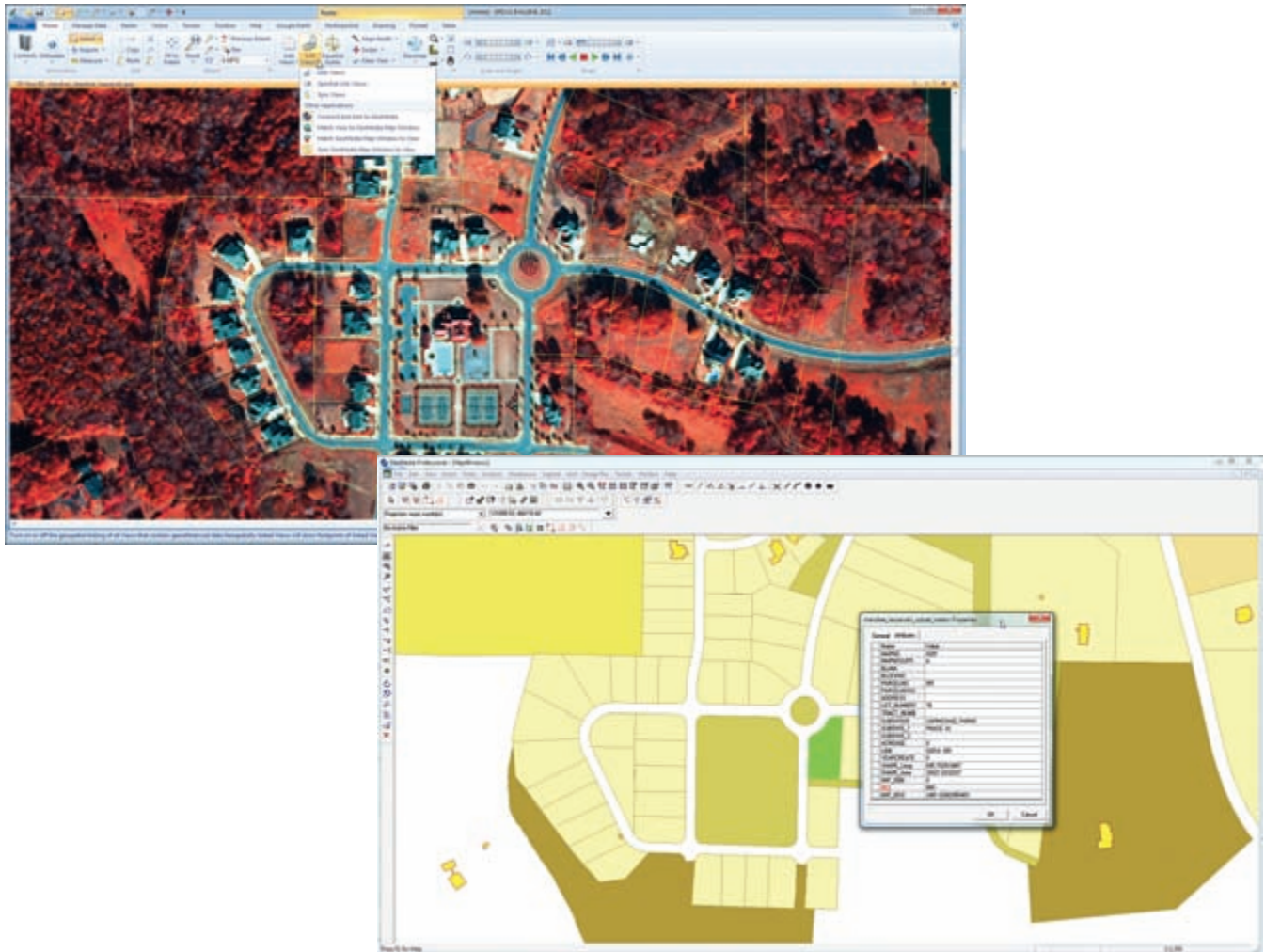
Developers and Esri partners can also use the SDK to create custom mapping applications for both internal and external use. ArcGIS Runtime SDK for Android is delivered via an Eclipse plug-in and contains

- Native Java libraries
- Integrated documentation, sample applications, and templates
- Conceptual and reference guide help
- Community resources including code galleries, forums, and blogs

[www.esri.com](http://www.esri.com)

# TOGETHER AT LAST

## Image Processing and GIS



### IN ONE PACKAGE TO RULE YOUR GEOSPATIAL WORKFLOW

Finally, you can have truly connected image processing and GIS products, not only simplifying purchasing and maintenance, but also providing a stronger, more streamlined geospatial workflow.

GeoMedia® delivers powerful GIS analysis and management, enabling you to realize the maximum value of your geospatial resources by integrating them to present clear, actionable information. ERDAS IMAGINE® incorporates industry-leading geospatial image processing and analysis and remote sensing capabilities. Brought to you by a SINGLE organization, you can easily leverage these two products in unison to construct a larger, clearer geospatial picture.

Spend less time trying to connect your data and focus on what you want to achieve with it.

[www.intergraph.com/geospatial](http://www.intergraph.com/geospatial)



## SPIRENT LAUNCHES DATA SETS TO AID GPS AND GLONASS RECEIVER TESTING

Spirent Communications has announced the launch of a data set subscription service for its *GSS6400 GNSS Record and Playback test System*. The data sets comprise of live GNSS (GPS, GLONASS and QZSS) environmental capture data set samples, recorded at major locations worldwide, in challenging urban and suburban conditions. The data sets encompass a variety of recorded scenario's ranging from drive through multi-level roads, tunnels & car parks to drive through in downtown areas with high rise buildings.

The data sets will be updated annually to ensure that differences in satellite constellations, urban topography and most importantly the current date and time are captured. [www.spirent.com](http://www.spirent.com)



## SEAZONE WRECKS DATABASE

There are thousands of recorded shipwrecks and many are not shown on navigation charts. Navigation charts only contain wrecks which are considered to be a navigational hazard. SeaZone has the definitive database of UK wrecks information and extensive worldwide coverage. SeaZone wrecks data is captured from multiple sources ensuring the best and latest information is available. As well as detailing wreck location, considerable additional information is available including wreck depth, identification, state, cargo, and circumstance of loss. SeaZone can provide information relating to wrecks in a specific geographic area or the whole wrecks database can be made available under license. This information is fully available for use in customer GIS systems.

[www.seazone.com](http://www.seazone.com)



## TURKISH EARTHQUAKE DAMAGE CAPTURED IN 360 DEGREES

FOR THE FIRST TIME IN TURKEY, AFTER THE VAN EARTHQUAKE, A DISASTER AREA HAS BEEN CAPTURED IN '360 DEGREES' WITH SPECIAL CAMERAS

Images are digitized with **Netcad** software in the scope of ABIS (Disaster Information System) Project. A two-person team with 8 cameras mounted on a vehicle has captured the 360 degree images of the disaster area where 7.2 destructive magnitudes struck on 23th November, 2011.

These 360 images are used to accelerate the preliminary damage assessment studies so that assessments were completed faster and disaster aid is determined more effectively, including compensation being paid to the owners.

[www.netcad.com.tr](http://www.netcad.com.tr)

## NUMBER OF TOMTOM HD TRAFFIC USERS DOUBLED IN 2011

At the end of 2011, 1.5 million people around the globe were actively using **TomTom LIVE Services**, including *TomTom HD Traffic*. Coming from 690,000 at the start of the year, TomTom continues to see growth in the use of its traffic information. Currently, over 90% of TomTom's automotive systems and 20% of TomTom's Portable Navigation Devices sold in Europe come equipped with LIVE Services. The quality of traffic services further improved

this year. TomTom HD Traffic now provides highly accurate traffic information of the whole road network including exit roads, slip roads and minor roads, which are not covered by competing technologies. Over 80 million people share anonymous location data with TomTom, ensuring HD Traffic provides its community with the best traffic information every other minute.

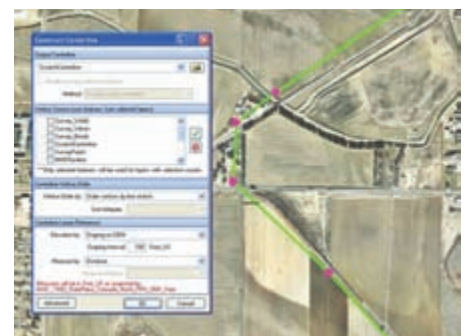
[www.tomtom.com](http://www.tomtom.com)

## NOW, NEW CENTURY SOFTWARE SUPPORTS LINEAR REFERENCING

New **Century Software** has released a new product suite that streamlines the process of creating a pipeline centerline and simplifies the tasks associated with linear referencing. *Centerline Design Toolkit* is a robust Esri ArcMap extension that consists of a number of individual tools for viewing and creating linear data. These tools simplify common tasks, such as connecting GPS points to create a line, assigning 2D or 3D measures, and generating events with stationing. All of these tasks are now achievable in less time with this toolkit. One of the main features within this toolkit is the Centerline Constructor that can generate the measure of a polyline from a variety of

vertices sources, including survey features, ILLI inspection, and existing centerline data.

[www.newcenturysoftware.com](http://www.newcenturysoftware.com)



## PCSKOG FORESTRY SOFTWARE UPGRADED WITH TATUKGIS DK.NET

Swedish company **pcSKOG AB** has released the 2011 version of its *pcSKOG Gård* forestry management program. *pcSKOG Gård* is used by forest owners to create and effectively use forest management plans. The focus of the 2011 version is simplification of the program user interface for greater ease of use and implementation of an efficient integrated mapping solution. Development using the *TatukGIS DK (.NET edition)* has enabled implementation of useful new features for project management, real-time GPS, sketch map editing, support for web map services, etc.

This is the first version of *pcSKOG Gård* developed with the *TatukGIS DK* – previous versions were based on *ESRI ArcView* as the GIS engine. *pcSKOG* products are used by the majority of forestry management companies and forest owners in Sweden. Customer response to the *pcSKOG Gård 2011* version has already been very positive.

[www.pcskog.se](http://www.pcskog.se)  
[www.tatukgis.com](http://www.tatukgis.com)

## BLOM RELEASES V 3.1 OF BLOMDESKTOP VIEWER

Following development of the *BlomURBEX API, v3.1* of the *BlomDESKTOP™ Viewer* is now available. *BlomDESKTOP Viewer* is **Blom's** stand alone geospatial data viewer and offers advanced measurement and interrogation capabilities. The latest release has largely focused on the addition of new features and the integration of *BlomSTREET™*, powered by *Cyclomedia*, ground level imagery technology. New features include:



- Full integration with *BlomSTREET* imagery
- LiDAR Viewer accessing data directly online
- Hosted LiDAR data
- Improved projections interface
- MapInfo tabs imported
- Labelling feature

*BlomDESKTOP Viewer* displays all of *Blom* data models, including vertical & oblique aerial imagery, height data and the recently released *Blom3D™* city models all in one unique application.

[www.blomasa.com](http://www.blomasa.com)

## DAT/EM MAKES DONATION TO THE UNIVERSITY OF ALASKA

**DAT/EM Systems International** donated 16 licenses of their *Summit Evolution Professional* digital stereoplotter to the Geomatics Department in the **University of Alaska Anchorage** (UAA) School of Engineering. Valued at over \$300,000, this gift forms part of *DAT/EM's* on-going initiative to sponsor higher education through software, software support, student training and consultation to the faculty.

This latest contribution will permit geomatics students to conduct 3D stereo image analysis in the school's new state-of-the-art photogrammetry teaching lab. By viewing photographs on computers in 3D stereo students will learn how to create maps and map databases for a wide variety of applications. These include *E-911* programs, smart-phone mapping such as *Google Maps*, base maps for engineering and construction, municipal and city planning, and geographic information systems.

[www.datem.com](http://www.datem.com)

SEND YOUR NEWS TO: [news@geoconnexion.com](mailto:news@geoconnexion.com)



## hosted by RIEGL USA **RIEGL LiDAR 2012** RIEGL International Airborne & Mobile User Conference

Join us at the first *RIEGL International Airborne and Mobile User Conference* in Orlando, Florida! Attendees will be offered three days of learning and networking sessions that cover various topics ranging from best practices to getting to know the *RIEGL* community. We also would like your participation and are seeking presenters for the user presentations. If you are interested, please mail to: [lidar2012@rieglusa.com](mailto:lidar2012@rieglusa.com)

### Highlights

- in depth-training and Q&A sessions for optimization of systems' investment
- on display:

**NEW VQ-820-G**  
bathymetric scanner

**NEW VMX-450** mobile scanning system and appropriate software solutions



**February 28, 2012 - March 1, 2012**  
**The Hilton Orlando, Florida**

**Register NOW!**

[www.riegl.com](http://www.riegl.com)



*RIEGL LMS GmbH*, 3580 Horn, Austria, [office@riegl.co.at](mailto:office@riegl.co.at)  
*RIEGL USA Inc.*, Orlando, Florida, [info@rieglusa.com](mailto:info@rieglusa.com)  
*RIEGL Japan Ltd.*, Tokyo, Japan, [info@riegl-japan.co.jp](mailto:info@riegl-japan.co.jp)

## BERGMAN PHOTOGRAPHIC SERVICES UPGRADES TO ULTRACAMXP

**Bergman Photographic Services** has upgraded its *UltraCamLp* digital aerial photogrammetric camera to an *UltraCamXp* system. Bergman primarily provides its aerial mapping and oblique photography services to mapping companies in the western US. The *UltraCamXp* will add new flight-planning and scheduling options by being able to collect at higher resolution and better accuracy at higher flying altitudes than film cameras.

"As Bergman Photographic adapts to changing customer demands and an evolving business climate, Microsoft is responsive through its upgrade program," said Alexander Wiechert, Microsoft Business Director. "We work with individual companies to identify desired capabilities and help select the best solutions over time."

[www.microsoft.com/ultracam](http://www.microsoft.com/ultracam)

## ESRI RELEASES NATIONAL GEOGRAPHIC WORLD BASEMAP

**Esri** and **National Geographic** have collaborated to produce a distinctive basemap that reflects National Geographic's cartographic design, typographic style, and map policies. Designed to be aesthetically pleasing, the National Geographic World Map is for users who want to display minimal data on a vibrant, highly detailed background. The map is currently available at ArcGIS Online in the basemap gallery. The new basemap combines a century-old cartographic tradition with the power of GIS technology to produce a distinctive Internet-based map service serving GIS, consumer, education, and mobile users. This new map will be added to Esri's collection of existing basemap services designed for different uses and needs. All Esri basemaps are freely accessible for internal- and external-facing sites.

[www.esri.com/news](http://www.esri.com/news)



# HANDHELD ACQUIRES TIMBATEC TO STRENGTHEN CENTRAL EUROPEAN PRESENCE

THE HANDHELD GROUP STRENGTHENS ITS PRESENCE IN THE IMPORTANT GERMAN, AUSTRIAN AND SWISS MARKETS WITH THE ACQUISITION OF TIMBATEC, THE HARDWARE DIVISION OF ITS DISTRIBUTION PARTNER LATSCHBACHER

**Handheld** will turn **TimbaTec** into two new companies, Handheld Germany GmbH and Handheld Swiss GmbH, which both will be fully owned by Handheld Group. TimbaTec's annual revenues are today approximately €3 million Euro (\$4 mUSD).

Handheld Germany will be managed by Helmut Feurhuber and Handheld Swiss will have Andreas Hitz at the helm. As a result of the acquisition, Handheld will have a local

service centre in Germany and Switzerland. TimbaTec brings Handheld a competent team and a valuable network of existing clients right from the start. The new offices in Germany and Switzerland will be number seven and eight alongside the group's existing offices in Sweden (headquarters), Finland, the Netherlands, Italy, Australia and the USA.

[www.handheldgroup.com](http://www.handheldgroup.com)

## SUPERGEO RELEASE SUPERSURV 3.0 BETA FOR ANDROID OS

**SuperGeo Technologies**, announced that its latest mobile survey application for Android OS, *SuperSurv 3.0* (beta), is released to the public now. Specially developed for field survey with Android 2.3 mobile devices, SuperSurv 3 is the application-oriented software which integrates GIS and GPS technologies to support global coordinate

system. Field users can collect, display, and measure GIS data accurately using the convenient Android OS. The main functionality is for data collection, layer management, waypoint orientation, map query and measurement, and supports the following file formats: GEO, SHP, SGT, KML, TXT, and CSV.

[www.supergeotek.com](http://www.supergeotek.com)

## 3D LASER MAPPING EXPANDS TO AUSTRALIA

**3D Laser Mapping** has announced a new operation in Australia. 3D Laser Mapping is an international developer of laser scanning solutions including the world's most accurate mobile mapping system StreetMapper and laser monitoring technology for the mining industry. The new office in Perth will be headed by Iain Bramwell acting as General Manager

and will provide local sales and support for the whole of the Asia Pacific region. 3D Laser Mapping have already completed a number of projects in the region, including StreetMapper surveys for highway and rail infrastructure projects. They are also actively working with many of the regions' leading mining operators.

[www.3dlasermapping.com](http://www.3dlasermapping.com)

## FUGRO AWARDED NEW ZEALAND AIRBORNE LIDAR BATHYMETRY SURVEY

**Fugro** has been awarded a contract for an *Airborne LiDAR Bathymetry (ALB)* survey in New Zealand by **LINZ** (Land Information New Zealand). Data will be collected to enable the use of ALB technology to be evaluated as a suitable tool for hydrographic surveys for nautical charting. The data from these surveys will enable LINZ to compare ALB with traditional hydrographic survey methodologies and techniques, specifically in terms of achieving depth accuracies and target detection in varying water depths and environmental conditions. This project follows on from previous ALB projects in Australia and Europe utilising the Fugro LADS Mk 3 ALB system, which uses a sophisticated laser sensor fitted to an aircraft



to accurately measure water depth and collect supporting data over both the marine and coastal zone environments.

[www.fugro.com](http://www.fugro.com)

## CRYPTZONE WARNS ON POTENTIALLY MAJOR GEO-LOCATION SECURITY RISKS

Commenting on the ICO's call for a rethink on location privacy, **Cryptzone** says that geo-location tagging security issues are likely to be a major issue in 2012 – and that many users of smartphones are unaware of the potentially serious security consequences of their use of the technology. According to Grant Taylor, vice president of the IT security and compliance specialist, now that most smartphones have native GPS/satnav features, the default setting for most pictures – and

videos – taken with these devices is to embed the GPS co-ordinates along with the date and time that the image was taken. "And when smartphones upload these images to the Internet – to portals such Facebook or Flickr – there's a strong chance they will also upload the GPS data as well. This information could be subsequently misused by third parties, perhaps for stalking purposes, or even cybercrime," he said.

[www.cryptzone.com](http://www.cryptzone.com)

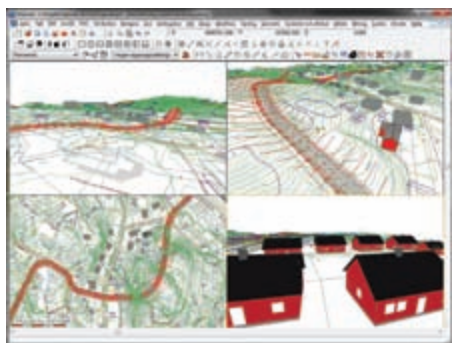
## TOPOCAD 14 – BUILD THE MAP IN THREE DIMENSIONS

*Topocad* is a CAD/GIS tool used by nearly half of Sweden's municipalities for their surveying and mapping activities. It is also used extensively for general surveying and stakeout by surveyors and construction companies. Now *Topocad version 14* is

released, and the biggest news is that it will be entirely in three dimensions. Not only can data use heights, but also it will be possible to fully work and look at the data even in the height. Topocad version 14 is also equipped with split views; it is now possible to use either one, two, three or four views. In these, different perspectives can be used and it is now possible to work across the views to get the best possible viewing angle in relation to the object.

The map now includes more than roads, property boundaries, buildings and contours. It is the basis for many different types of jobs; from finding the right path from A to B, via the base for building permits and projections, to the analysis of flood plains and positioning in real time using GPS.

[www.adtollo.se](http://www.adtollo.se)



## ALTUS LAUNCHES GPS EVIDENCE MAPPING PACKAGE

**Altus Positioning Systems** have introduced a new GPS-based evidence mapping system for law enforcement. The new Altus evidence mapping package includes an ikeGPS multi-sensor data acquisition system integrated with *MapScenes' Evidence Recorder* custom software for evidence collection and scene mapping.

The ikeGPS multi-sensor data acquisition platform combines a GPS receiver, laser rangefinder, 3-D compass and digital camera in a single ruggedized handheld device, providing a fully integrated low-cost solution for capturing geospatial data on scene.

[www.altus-ps.com](http://www.altus-ps.com)

## 1 SPATIAL RESUMES OGC TC LEVEL MEMBERSHIP

**1Spatial** is delighted to announce that after a lapse of eight years, the company has resumed its **OGC Technical Committee (TC)** level of membership. 1Spatial originally joined OGC in 1996. Together, with GE Smallworld, the company hosted the first TC event outside North America in August 1997. It was also the first at which specifications were approved and adopted (Simple Features). 1Spatial continued to participate at the TC level for nearly a decade and Dr Paul Watson made a significant contribution to the topology definition contained in GML. Although dropping out from the TC level, 1Spatial has continued to contribute to OGC activities and has been active in the Data Quality Working Group, co-chaired by Dr Matt Beare. Participation in these activities has contributed to 1Spatial having a unique set of capabilities in data quality assessment for sharing.

[www.1spatial.com](http://www.1spatial.com)

## GARMIN AND MCMURDO LTD JOIN FORCES

**McMurdo Ltd** and **Garmin®** have joined forces and are pleased to announce that all *AIS-equipped Garmin plotters* will be optimised to work with the *McMurdo Smartfind S10 personal AIS Beacon* and the *Kannad Marine SafeLink R10 Survivor Recovery System (SRS)*. These innovative personal safety devices incorporate both AIS and GPS technology which, when manually activated, give precise location information to aid the recovery of persons in difficulty at sea.

The Smartfind S10 and SafeLink R10 are the must-have personal devices for all safety-conscious sailors, with the chances of being rescued greatly increased thanks to their unique ability to transmit both AIS and GPS data to the vessel the individual has come from, and to other AIS equipped vessels within a typical four mile radius. They also feature inbuilt high precision GPS receivers, which transmit target survivor information, including structured alert messages, GPS position information, and a unique serialised identity number.

[www.garmin.co.uk](http://www.garmin.co.uk)