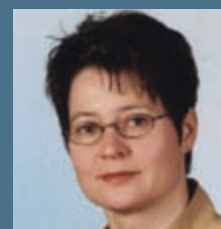




TOWARDS A COMMON UNDERSTANDING IN CARTOGRAPHIC DESIGN

HARMONISATION OF CARTOGRAPHIC DESIGN – AS WELL AS FEATURE AND ATTRIBUTE CONCEPTS – IS ESSENTIAL IN THE CONTEXT OF A PAN-EUROPEAN SPATIAL DATA INFRASTRUCTURE. SO ARGUES DR. ANJA HOPFSTOCK OF GERMANY’S FEDERAL AGENCY FOR CARTOGRAPHY AND GEODESY (BKG) IN THIS ONE-TO-ONE WITH ESRI STAFF WRITER, KAREN RICHARDSON



Dr. Anja Hopfstock (pictured) received her diploma in cartography from the Novosibirsk Institute of Engineers of Geodesy, Airphoto Surveying & Cartography (now Siberian State Geodetic Academy), Russia, in 1991. In late 1992 she joined the Cartographic Department of the Federal Agency for Cartography and Geodesy in Frankfurt (www.bkg.bund.de), being mainly engaged in the Topographic Information and Update Service. In 1996 she moved to the Department of Geoinformation and has since been involved in several international cooperation projects including the EuroRegionalMap and EuroGlobalMap datasets from EuroGeographics, (www.eurogeographics.org) the Geneva-based body representing some 46 national mapping, land registry and cadastral agencies across Europe.

Karen Richardson (KR): *You have focused quite a bit of your doctorate work on the advantages and disadvantages of a common graphic representation of European topographic data ... one that can be shared among countries. Tell me why you feel this is such an important topic to address.*

Anja Hopfstock (AH): Similar to the national level, good governance across Europe requires relevant, harmonised, and quality geographic information for the formulation, implementation, monitoring, and evaluation of European Community policies.

Today, pan-European datasets such as EuroBoundaryMap, EuroRegionalMap, and EuroGlobalMap from EuroGeographics (examples illustrated below, top to bottom) provide a continuous, seamless, and object-based description of the European landscape.



Built from national contributions, they fulfill the INSPIRE (Infrastructure for Spatial Information in Europe) principles and can be regarded as elements of the European SDI (Spatial Data Infrastructure) data collection. However, cooperation currently focuses solely on the harmonisation of feature and attribute concepts.

Based on the understanding that geographic information is the result of human geospatial information processing, it is argued that cartography is essential in the SDI context to achieve the objectives of SDI. My thesis aimed at exploring the concept of user-oriented map design in relation to SDI and elaborating a methodology for creating effective cartographic representations for SDI-relevant user types.

KR: *How can SDI be used successfully by the many different types of users you are serving?*

AH: In general, two main groups of SDI end users can be distinguished, considering their abilities and capabilities to handle geospatial data: expert users (i.e., spatial planners) and non-expert users (i.e., decision makers and the general public).

The visualisation of geospatial data has a key function for data discovery and evaluation, because the data become easier to understand and interpret if presented in the appropriate context. Currently, SDI geoportals provide a marketplace for users to access SDI data collections. Discovery and view, download, and transformation services assist users to find, locate, and transform the data for their task-specific aims. So far, the presentation of geospatial data has only been considered at a basic level. However, the user's acceptance in terms of usability depends on a useful graphical presentation of the geospatial data.

A comprehensive access service to the underlying geospatial data should not be limited to simple discovery, view, and download functionalities but should include graphical presentations that consider the user's capabilities and abilities to handle geospatial data. This means that the visual component of the data is used in the data supply chain so that the graphic presentation enables a communicative, map-based acquisition of geographic information that stimulates the visual reasoning of users and, ultimately, supports decision making.

KR: *Tell me about your experiences working with the INSPIRE working group and helping national mapping organisations comply with INSPIRE.*

AH: As a EuroGeographics expert, I was a member of the Thematic Working Group, setting up the data specification for the INSPIRE Annex I theme, Hydrography.

For the last two and a half years, I have led the work package, elaborating how to migrate the existing EuroGeographics products into the INSPIRE framework. The ESDIN project,

co-funded by the European Commission, had an ambitious mission to provide best practices in creating harmonised data across Europe to help countries meet their INSPIRE obligations. ESDIN has gone beyond this to lay the foundations for the European Location Framework of data and services (for further details see the 'ESDIN: bringing harmony to discord' article published in our October 2011 issue – Ed).

It has created an integrated data model and successfully transformed the existing EuroGeographics products into a dataset for pan-European harmonisation. ESDIN has proposed extensions to the INSPIRE specifications to provide seamless cross-border datasets. These data specifications will enable the interoperability of topographic, administrative, and cadastral reference data to comply with the INSPIRE Directive and other user requirements at the European level. Conformance to these specifications will enable National Mapping Organisations to fulfill INSPIRE requirements.

KR: *How do you see the INSPIRE Directive assisting in ensuring that proper symbology and understanding of geographic data permeates throughout Europe?*

AH: Member states of the European Union are obliged to make geospatial datasets available in conformance with the INSPIRE data specification through services that allow visualisation, overlay, or spatial and temporal analysis of spatial information from different sources.

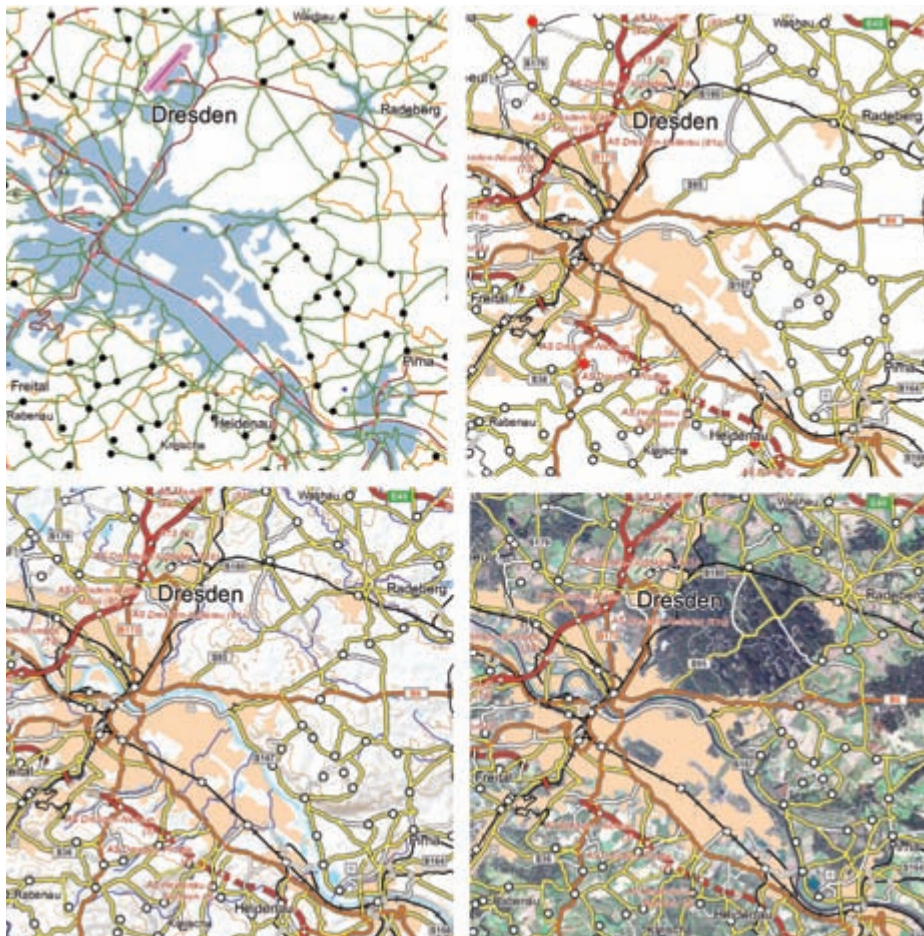
The INSPIRE Implementing Rules for View Services recommend that "datasets belonging to the same theme shall be rendered following the same portrayal rules, in a default rendering style. This style shall be defined for each layer across Europe." The current version of INSPIRE Data Specifications for Annex I themes (v3.0) define only a basic default style per spatial object type despite the recommendations on how to establish the portrayal rules. These are given in section A.11, Portrayal of the INSPIRE methodology for the development of data specifications:

The symbology should be chosen in order to have cartographically correct data representation.

Portrayal rules in INSPIRE should be built upon existing cartographic experience and upon common traditions, if they exist.

If, for a given theme, harmonised rules about portrayal already exist, they should be adopted by INSPIRE data specifications.

With respect to the current and future availability and usability of geospatial data, there are certain doubts that spatial datasets provided for INSPIRE from different member states can be used directly for the production of a reference map at a certain scale. A thorough analysis of metadata and data quality will be required to evaluate the data fitness for use.



Combining data from multiple sources

KR: Tell me how you developed a map design specification to meet this challenge

AH: The development of the map design specification for a European reference map at a scale of 1:250,000 was approached by evaluating and comparing existing map products to achieve an optimal cartographic design. Using a cartographic reverse-engineering approach, an inventory and comparative study of 24 European topographic and commercial road maps were carried out.

The inventory gave a general overview about the map content and the bandwidth of cartographic representations used in Europe today. The comparative study then

offered an insight into the basic principles and elements of their map composition. For the test implementation, three different source datasets were acquired from European SDI stakeholders: EuroDEM, EuroRegionalMap and Image2000. The gap analysis of the EuroRegionalMap data set against the proposed content concept revealed a high overlap. The preparation of the other two source datasets required extensive preparation and preprocessing to transform the data into cartographic representations according to their intended usage (illustrated above).

ArcGIS provided the underlying technical environment for the transformation of the source data into cartographic representations

and map compilation. We did this because the EuroRegionalMap and EuroDEM datasets were available in Esri data formats. Also, ArcGIS provided all the necessary functions to handle and transform the data.

KR: Based on your study, do you feel it is achievable to expect so many different countries to work together on a harmonised European symbol catalog?

AH: In general, yes, it is achievable, but there are still some issues to resolve regarding the data harmonisation and technological aspects. Map design in the SDI context is a challenging task. The wide range of map use contexts requires a great flexibility of design variants depending on the dimension of human-map interaction. The map design needs to be user driven for efficiency. Besides their function as a graphic interface, maps facilitate a common understanding of the depicted geographic features and phenomena when sharing geographic information between SDI users.

The case study proved that it is feasible to produce a reference map from multiple sources. However, comparable and consistent map content requires semantically and geometrically harmonised reference data. Providing geospatial data based solely on national classifications might not be sufficient for work at the European level. If a European SDI aims at facilitating a common understanding of the European landscape, it is essential to introduce European classification schemes for feature and attribute concepts.

The results of the case study provided a first design solution for a future European reference map. This map prototype needs to be further evaluated by both cartographic professionals and users before it can be implemented as a design solution in the European SDI. It is supposed that the evaluation verifies that the proposed design concept enables spontaneous recognition of most map features due to the reverse-engineering approach.

For more information on Esri solutions for INSPIRE, visit www.esri.com/inspire

MARCH 2012

SPRING COMPANY SHOWCASE

Our regular 'Company Showcase' feature is the opportunity for suppliers of goods and services from all branches of the geomatics industry to acquaint readers with their latest offerings. Innovation is key to success in today's geomatics market place... one where traditional boundaries are being blurred by the latest trends in convergence and functionality, and it is vital that users can take advantage of these technological advances.

Bookings for the Spring Showcase now being taken – don't miss this exciting opportunity!

email: mickiknight@geoconnexion.com Spring Showcase entry deadline: 27 January 2012

Geo:

Geoconnexion International Magazine